



SHADING SOLUTIONS BY DESIGN



 **Obscura**<sup>®</sup> Rooflight systems



# Rooflight systems

## OVERVIEW

- Used for areas of up to 6m wide, 10m long or 50m<sup>2</sup>
- Manual or motorised rollers
- Headboxes can be added to become Sunfacta® rooflight systems

## SYSTEM DETAILS

SHY Obscura® rooflight blinds can operate in a vertical or horizontal position and at any angle in between, drawing upwards, downwards, or sideways.

Quick-fix, high strength brackets are sized to match the tube diameter. Operation can be manual or motorised. For the largest sizes, our double motor FTS system would be specified.

For most sizes, a single motor system is used, located inside the cloth tube. At the tension end of the blind, spring boxes pull the fabric across. Steel guide wires may also be used along the sides, depending on the size of the blind, to guide the hembar.

## APPLICATION

These systems are used in many commercial installations as well as high-end domestic situations. They are ideal when building occupants need to control the amount of light, glare and heat attributable to the skylight. Utilising a wide choice of blind fabrics, many levels of shading can be achieved.

Hardware can be powder coated to any RAL colour (standard colours are white and black) to suit existing surroundings.







# Obscura<sup>®</sup> Features



## TUBES

- Tube sizes are 50, 60, 80 & 110 (possibly FTS) and 160 (FTS only)
- Choice of tube depends on the size of the blind, with larger blinds requiring a larger tube



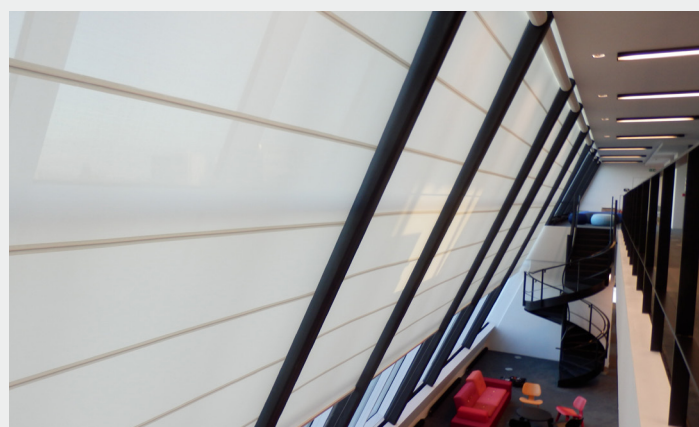
## CONTROL

- Radio control – remote or switch
- Hard wired – switch or integration into control systems
- Crank handle (up to 2.7m wide and 3m long)



## FABRIC

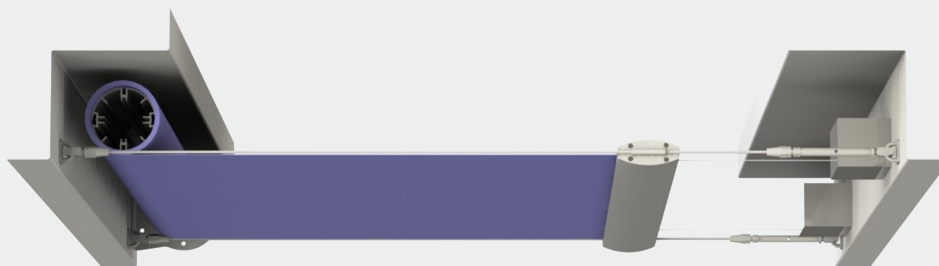
- Blackout – prevents or significantly reduces the amount of light passing through the fabric
- Glass fibre and polyester screen – protect against heat and glare of the sun



## FTS - FABRIC TENSIONING SYSTEM

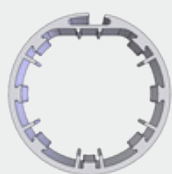
- Used for larger blinds
- An FTS is a double-motor system with a special motor at both ends of the blind. The motors "talk" to each other through a control box which allows adjustment of the moving and finishing tension

## System Specification



Obscura® rooflight with spring boxes

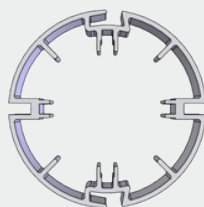
### TUBE DIMENSIONS



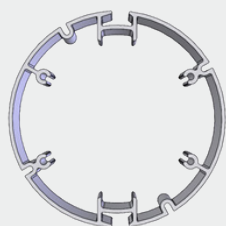
50mm tube



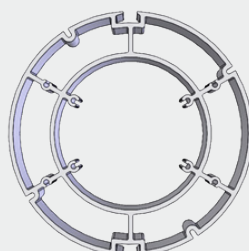
60mm tube



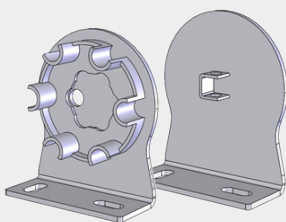
80mm tube



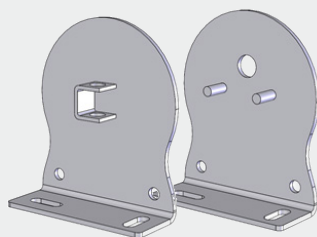
110mm tube



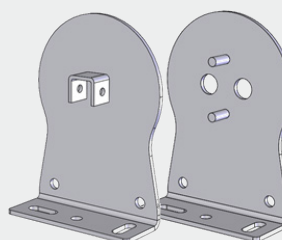
160mm tube



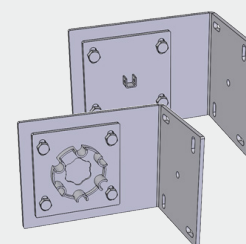
60 80 brackets



65 brackets

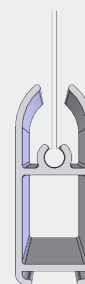


65 long brackets

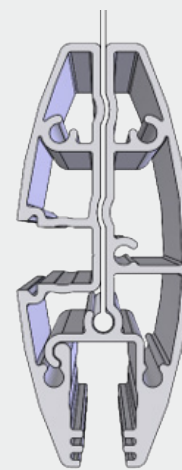


125 or heavy duty

### HEMBARS



36mm



75mm

### OTHER SYSTEMS IN THE ROOFLIGHT RANGE

- SHY ZIP® CTS rooflight blind (with headboxes and side channels, for areas of up to 14m<sup>2</sup>)
- SHY ZIP® FTS rooflight blind (with headboxes and side channels, for areas of up to 50m<sup>2</sup>)
- SHY Wireless rooflight blind (with headboxes and side channels, no visible wires for widths of up to 3m and draw of 3.5m)

### GET IN TOUCH...

UK T: 01462 455 400  
Worldwide T: +44 1462 455 400  
Email: [info@shy.co.uk](mailto:info@shy.co.uk)

**Head Office**  
2B Dunhams Lane,  
Letchworth, Herts, SG6 1BE

[www.shy.co.uk](http://www.shy.co.uk)