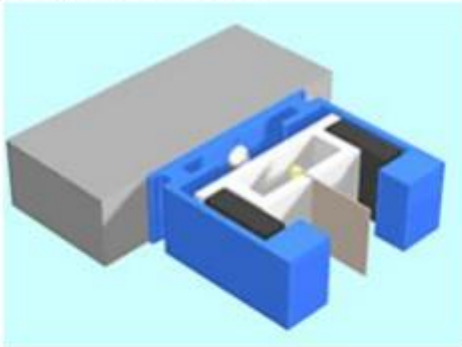


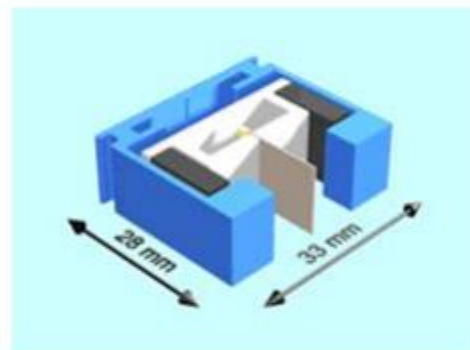
## ZIP Side Channels & Fixings

### 33 (28) channel



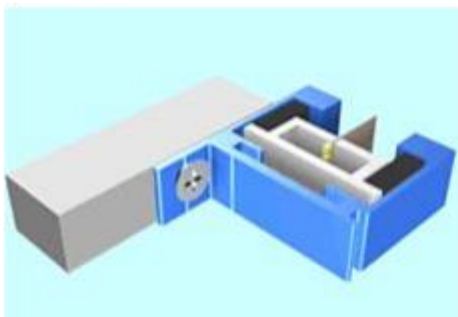
Available for the 85, 110, 150 and 200 Box. Heavy duty or external applications. The main channel consists of a powder-coated or anodised extrusion, with snap-on plastic facings, allowing most maintenance to be carried out with the blind in place. Detail indicative, colours shown are for illustration only. Standard colours are White and Black, special RAL colours may be ordered.

### Side Fix



Use standard channel and drill through back of channel after removing plastic inner rail and the facings. The inner rail and facings are re-attached once the blind is fitted.

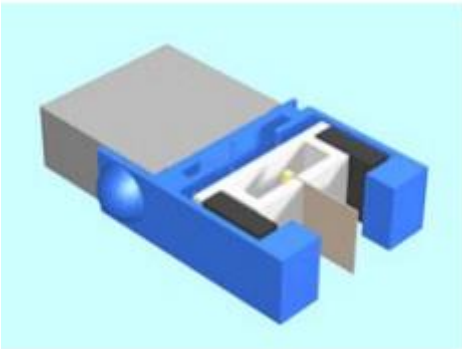
### Face Fix



Use flanged channel and fix through flange into window reveal or timber batten. Note - For face-fix fitting, flange extends beyond width of blind

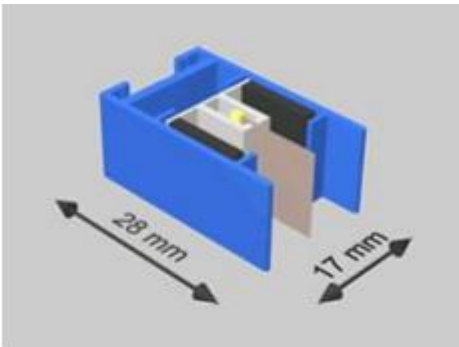
## 33 (28) channel cont/d

### Alternative Face Fix



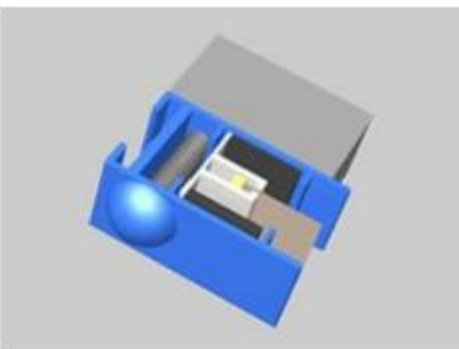
Use flanged channel and fix through flange into timber batten or the reveal edge. Note - Flange extends beyond width of blind. As with the 17 (28) channel, plastic caps may be fitted to cover heads (colour match is a customer responsibility).

## 17 (28) channel



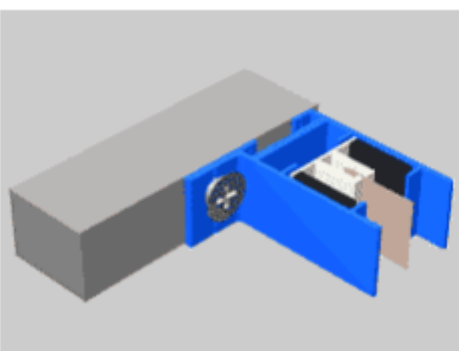
Available for the 65 Box only. Designed for lightweight applications. Please note, for certain maintenance requirements, including changing a cloth, the blind will have to be taken down. Detail indicative, colours shown are for illustration only. Standard colours are White and Black, special RAL colours may be ordered.

### Face Fix



Use standard channel and drill through face of channel. With suitable screws, plastic caps may be fitted to cover screw heads (colour match is a customer responsibility). In some situations, VHB (Very High Bond) adhesive tape can be used to install these channels.

### Side Fix



Use flanged channel and fix through flange into window reveal. If there is sufficient space, it is worth considering, locating the flanges behind the blind.